

DANIEL BREWER

51 High Street
Great Dunmow
Essex, CM6 1AE

Telephone • 01371 856585
Website • www.danielbrewer.co.uk
E-mail • info@danielbrewer.co.uk



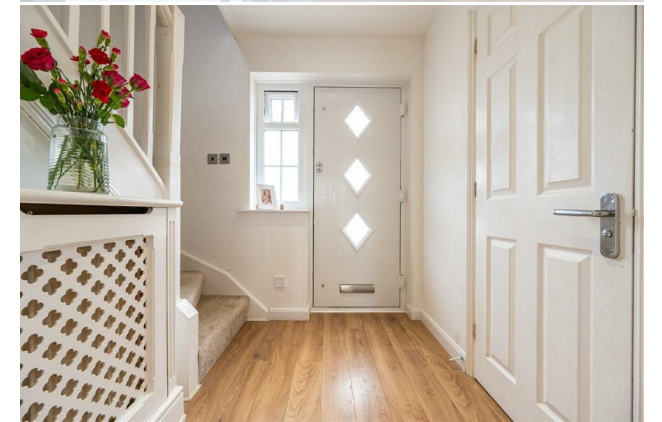
Daniel Brewer

51 High Street
Great Dunmow
Essex, CM6 1AE

Telephone • 01371 856585
Website • www.danielbrewer.co.uk
E-mail • info@danielbrewer.co.uk

HEYWOOD LANE, DUNMOW

OFFERS OVER £500,000



HEYWOOD LANE DUNMOW

Daniel Brewer are pleased to market this spacious three double bedroom detached family home finished to a high standard throughout. The property is conveniently located down a quiet residential road within walking distance to the town centre and walks along Bluebell Woods and the Fritch Way. In brief the accommodation on the ground floor comprises:- Entrance Hall, open plan kitchen/dining/family room, living room, conservatory and a cloakroom. On the first floor there are three double bedrooms, dressing area and en-suite facilities to bedroom one and a family bathroom. Externally there is ample driveway parking and a fully landscaped secluded rear garden.



This market town of Great Dunmow is a bustling town full of independent shops, restaurants and public houses/bars. The town centre is full of historic buildings with some stunning seating areas which include the renowned "Doctors Pond" at Talberds Ley. Some of Great Dunmow's facilities include:- leisure centre, various additional gyms, supermarkets, fantastic primary & secondary schools, parks. The town offers fantastic transport links to Stansted Airport, Chelmsford City and Bishop's Stortford.





- **Three Double Bedroom Detached Family Home**
- **Desirable Location Within Walking Distance To Town Centre**
- **Beautiful Kitchen/Dining/Family Room**
- **Living Room**
- **Conservatory**
- **Dressing Room & En-Suite Facilities To Bedroom One**
- **Family Bathroom & Cloakroom**
- **Ample Driveway Parking**
- **Fully Landscaped Rear Garden**
- **High Standard Of Finish Throughout**

Entrance Hall

7'11" x 5'11" (2.434 x 1.807)

Entered via partly glazed front door, ceiling mounted light fitting, under stairs storage cupboard, radiator, stairs rising to first floor landing, doors leading to:-

Kitchen/Dining/Family Room

18'0" x 18'5" (5.501 x 5.636)

Two windows to front aspect, Bi-Fold doors to rear aspect leading to rear garden, fitted with a range of eye and base level unit with granite working surface over, inset one and half bowl sink with mixer tap, integrated dishwasher, integrated washing machine, four ring electric hob with extractor fan over, integrated fridge/freezer, integrated oven, space for wine cooler various inset spotlights, three ceiling mounted light fitting, tiled flooring.

Living Room

15'2" x 10'10" (4.640 x 3.317)

Bi-fold doors to rear aspect leading to conservatory, various inset spotlights various power points, radiator, door leading to:-

Conservatory

10'5" x 10'6" (3.183 x 3.218)

Windows to multiple aspect, French Doors to rear aspect

leading to rear garden, ceiling mounted light fitting, various power points.

Cloakroom

2'7" x 5'11" (0.803 x 1.807)

Opaque window to side aspect, wash hand basin with pedestal, low level W.C, radiator.

First Floor Landing

Various inset spotlights, access to loft, doors leading to:-

Bedroom One

17'8" x 8'10" (5.400 x 2.694)

Window to front aspect, window to rear aspect, various power points, radiator, various inset spotlights, open plan leading to:-

Dressing Area

8'4" x 6'0" (2.550 x 1.852)

Opaque window to side aspect, range of fitted wardrobes, various inset spotlights, radiator, access to further loft, door leading to:-

En-Suite

6'2" x 8'3" (1.887 x 2.536)

Opaque window to rear aspect, low level W.C, wash hand





basin with floating vanity unit and mixer tap, double walk in shower with glass screen, wall mounted heated towel rail, various inset spotlights, extractor fan, tiled flooring, tiled walls.

kitchen/dining/family room perfect for entertaining and a further decked seating area with space for hot tub. The remainder is laid with artificial lawn.

Bedroom Two

8'11" x 12'3" (2.730 x 3.753)

Window to front aspect, various power points, radiator, various inset spotlights, door to airing cupboard.

Bedroom Three

7'8" x 8'10" (2.351 x 2.713)

Window to rear aspect, various power points, radiator, various inset spotlights.

Family Bathroom

6'2" x 6'5" (1.902 x 1.968)

Opaque window to rear aspect, low level W.C, wash hand basin with mixer tap, bath with mixer tap over, wall mounted heated towel rail, various inset spotlights, extractor fan.

Secluded Rear Garden

The rear garden has been fully landscaped and is now low maintenance. There is a patio area directly to the rear of the property leading from the bi-fold doors from the

